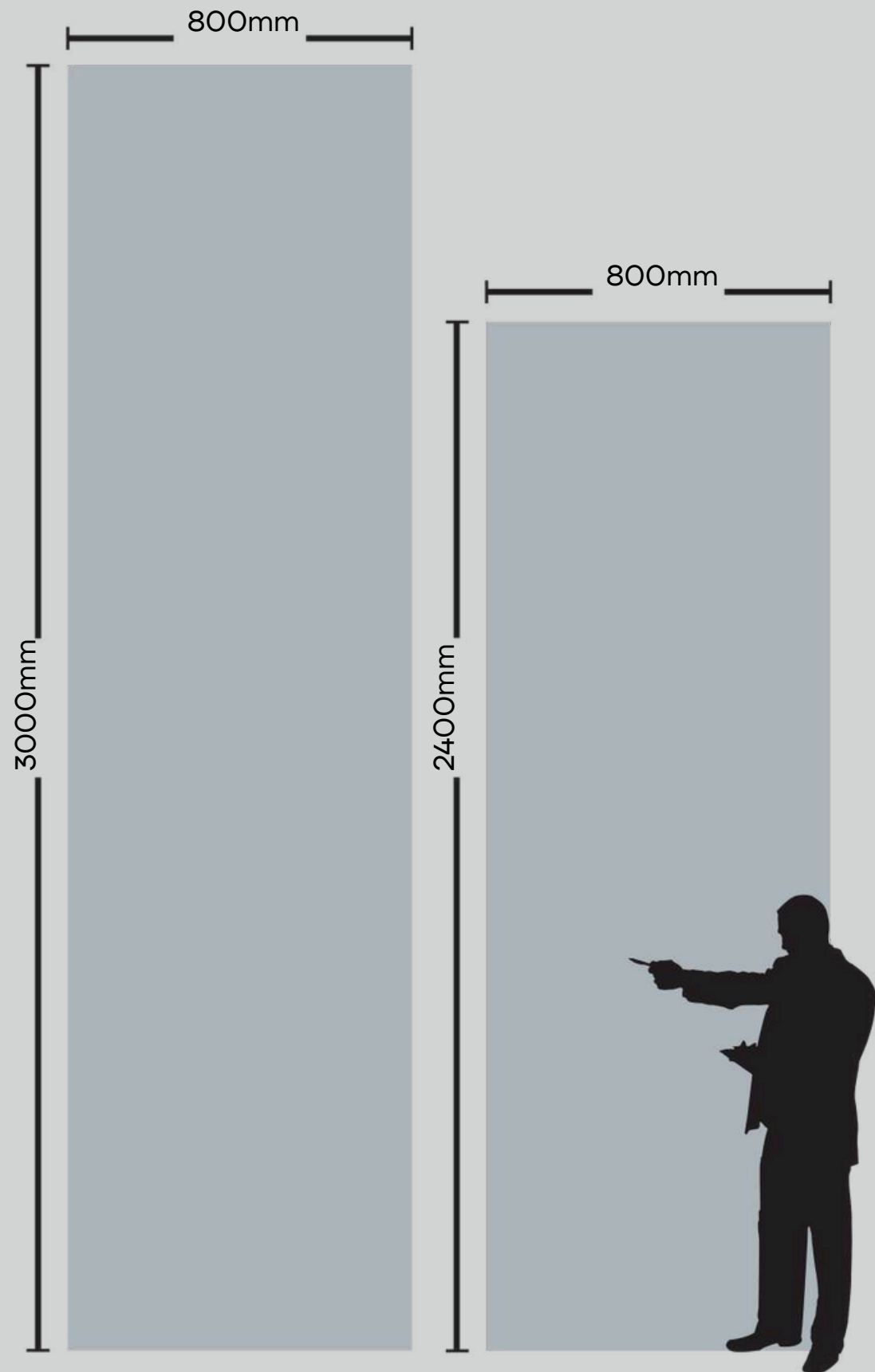


LUXERA  
SURFACE  
CRAFTING THE ERA OF LUXURY

KOREAN  
SERIES

# PRODUCT

## FORMATS



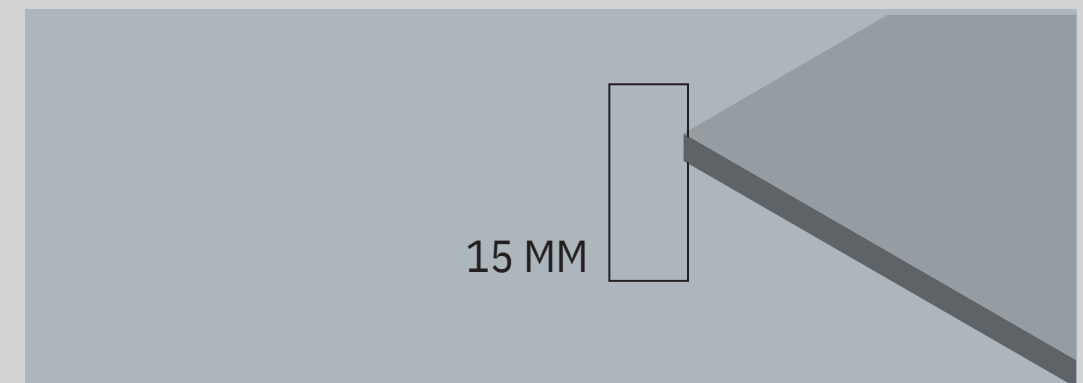
### SIZES

800x2400 MM | 800x3000 MM

TYOLOGY  
FULL BODY

FINISH  
GLOSSY / MATT

THICKNESS  
15 MM



The thicknesses are one of the most important elements characterizing.

15 MM is set aside for the most demanding product applications such as kitchen countertops.



KOREAN  
SERIES



**COLORS**

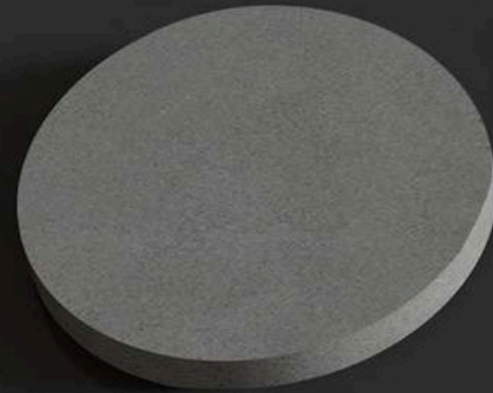
Our collections offer professional grade performance while seamlessly blending

---

the latest innovations with a premium design aesthetic crafted with authentic, high-quality materials. Ducts.



BASALT FEEL



VANILA PEPPER



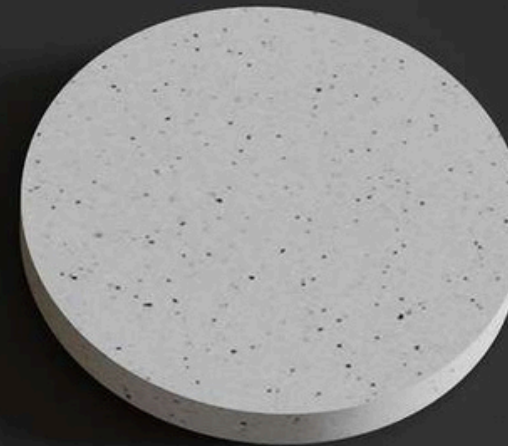
GREYLITE FEEL



LAVA ROCK



ICE QUEEN



---

**HERITAGE,  
ART,  
INNOVATION,  
DESIGN.**

Each slab is unique and authentically different from all the others: the dynamic harmony of the nuances shapes surfaces with an exclusive beauty.

← GLOSSY FINISH

MATT FINISH →



15 MM  
THICKNESS



---

Minerals.  
Nature. Craftmanship.

Natural **minerals** and  
raw materials, combined  
in a **naturally**  
**random** pattern.

KOREAN  
SERIES

## APPLICATION Areas

KITCHEN COUNTERTOP



DINING TABLE



LIVING ROOM



FURNITURE



STAIRCASE



OFFICE TABLE



TABLE TOP



DOOR \ WINDOW  
FRAME



## TECHNICAL Features

LIGHTWEIGHT

WATERPROOF

RESISTANT TO SCRATCHES

RESISTANT TO HIGH  
TEMPERATURES

EASY TO CLEAN

RESISTANT TO BENDING

100% NATURAL

RECYCLABLE

HYGIENIC

RESISTANT TO UV RAYS



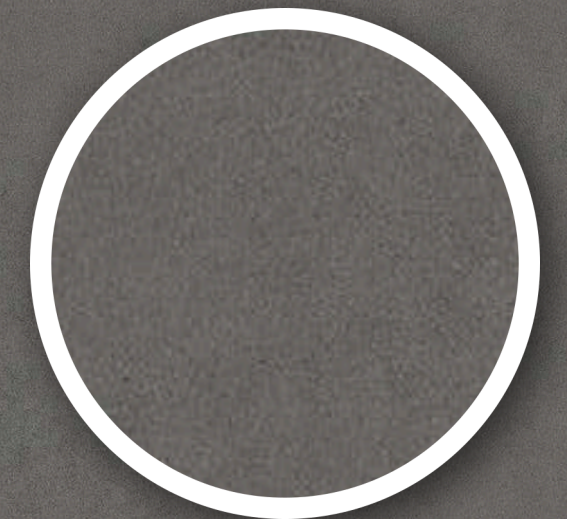
TOUCH FOR  
360 VIRTUAL&WALKTHROUGH

SIZE  
800x3000 MM

TPOLOGY  
FULL BODY

FINISH  
MATT

THICKNESS  
15 MM



BASALT FEEL



LUXERA  
SURFACE  
CRAFTING THE ERA OF LUXURY



BASALT FEEL

Q  
U  
A  
L  
I  
T  
Y



LUXERA  
SURFACE  
CRAFTING THE ERA OF LUXURY



BASALT FEEL



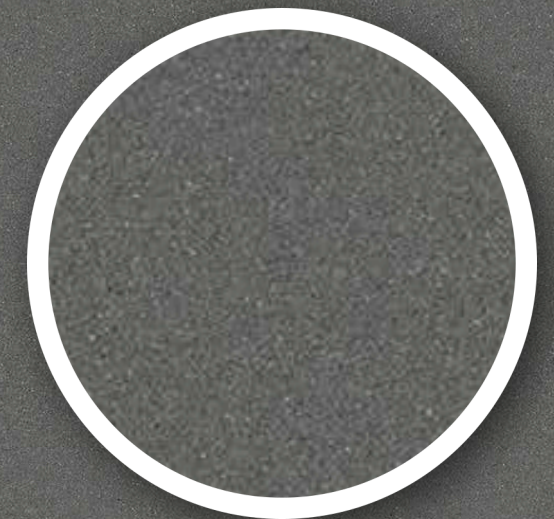
TOUCH FOR  
360 VIRTUAL&WALKTHROUGH

SIZE  
800x2400 MM  
800x3000 MM

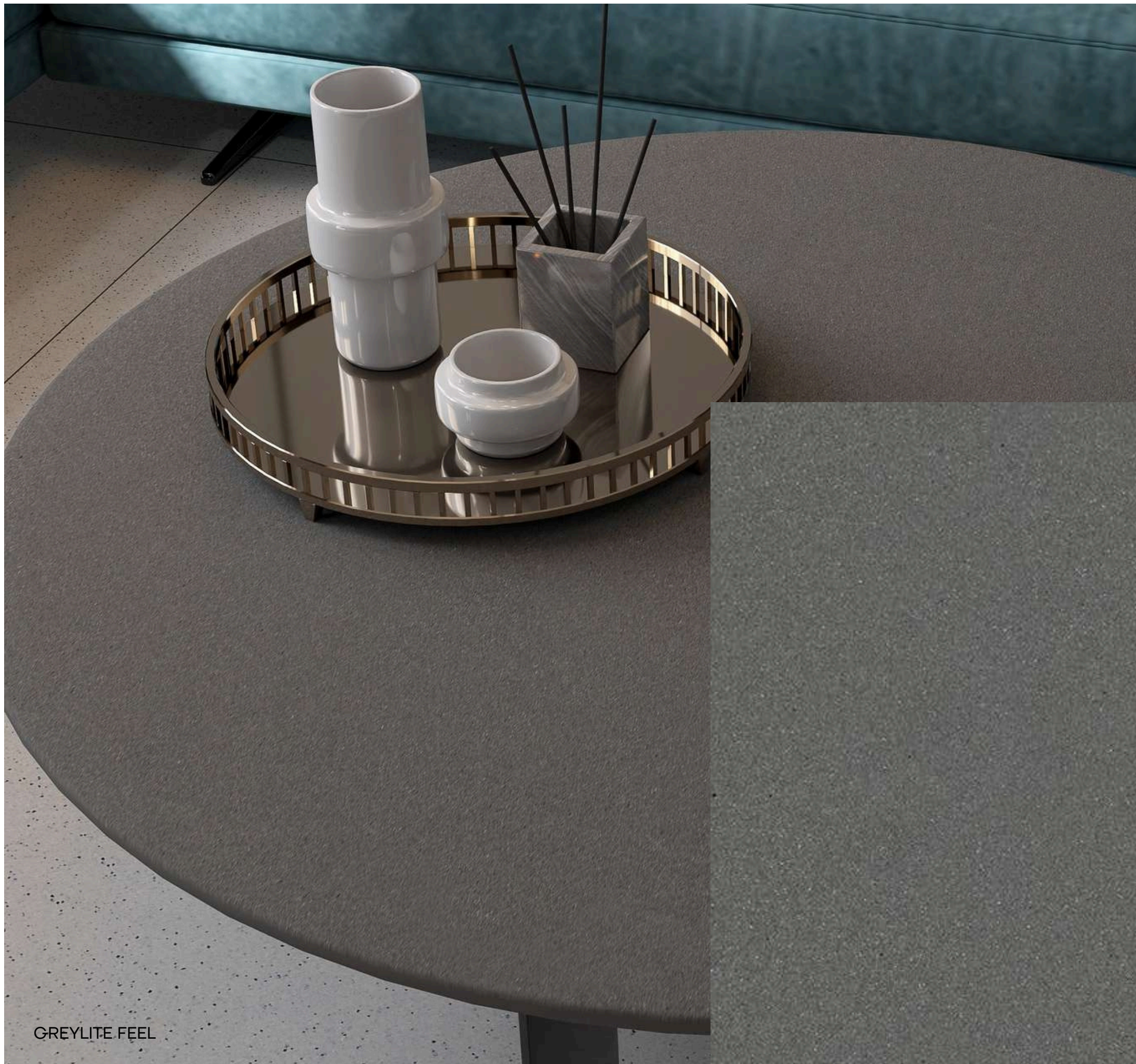
TPOLOGY  
FULL BODY

FINISH  
MATT

THICKNESS  
15 MM



GREYLITE FEEL



E  
X  
O  
T  
I  
C

GREYLITE FEEL

 LUXERA  
SURFACE  
CRAFTING THE ERA OF LUXURY



LUXERA  
SURFACE  
CRAFTING THE ERA OF LUXURY



GREYLITE FEEL



**360°** |   
TOUCH FOR  
360 VIRTUAL & WALKTHROUGH

SIZE  
800x2400 MM  
800x3000 MM  
TYPOLOGY  
FULL BODY

FINISH  
GLOSSY / MATT

THICKNESS  
15 MM



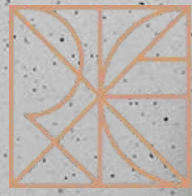
**ICE QUEEN**



LUXERA  
SURFACE  
CRAFTING THE ERA OF LUXURY

B  
E  
A  
U  
T  
Y

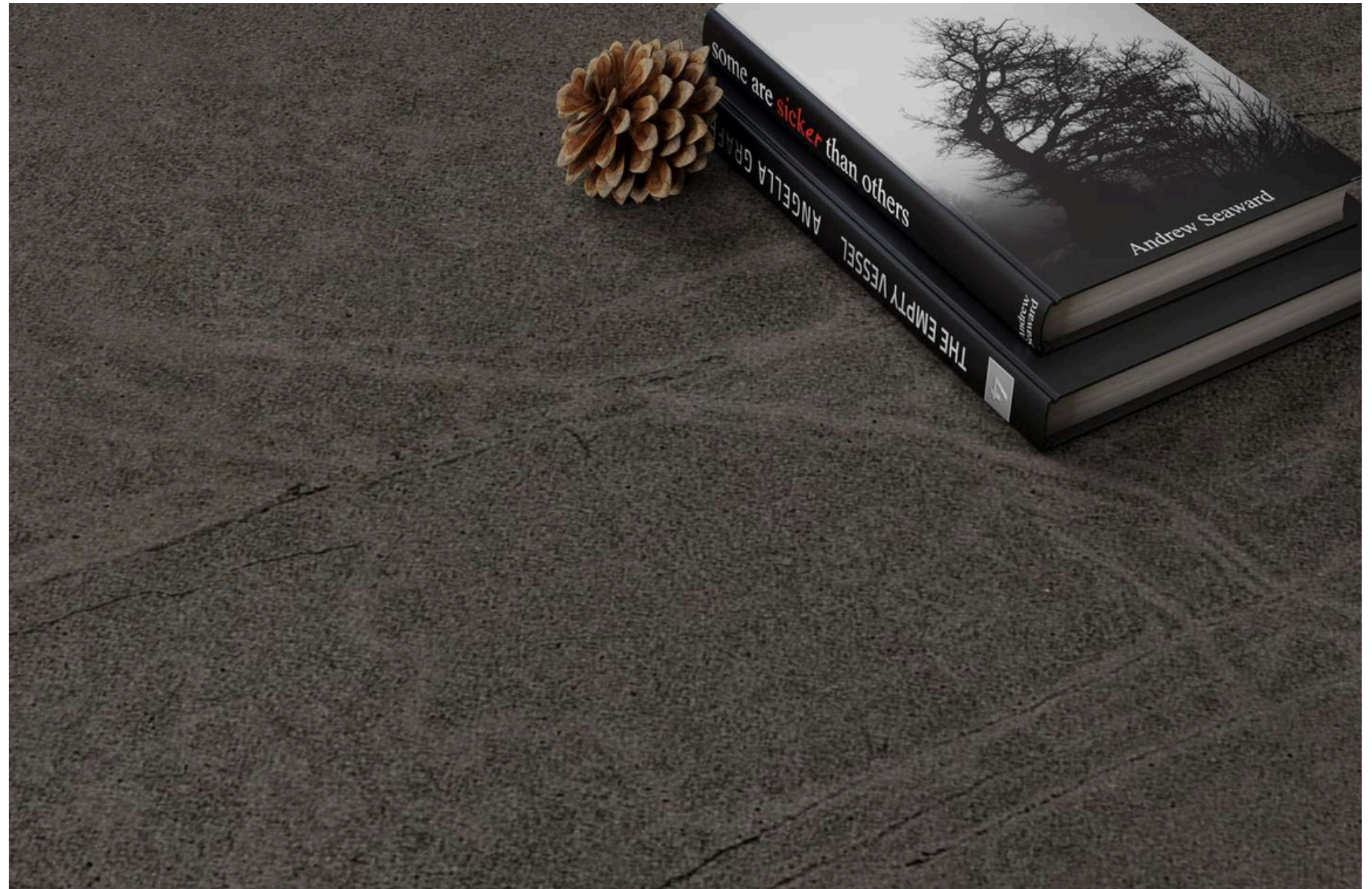
ICE QUEEN



LUXERA  
SURFACE  
CRAFTING THE ERA OF LUXURY



ICE QUEEN

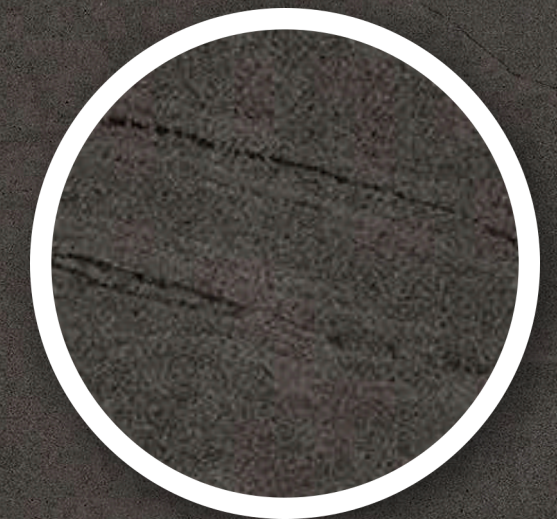


SIZE  
800x3000 MM

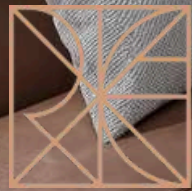
TPOLOGY  
FULL BODY

FINISH  
MATT

THICKNESS  
15 MM



LAVA ROCK



LUXURY  
SURFACE  
CRAFTING THE ERA OF LUXURY



LAVA ROCK

E  
N  
R  
I  
C  
H  
I  
N  
G



LUXERA  
SURFACE  
CRAFTING THE ERA OF LUXURY



LAVA ROCK



360° |   
TOUCH FOR  
360 VIRTUAL&WALKTHROUGH

SIZE  
800x2400 MM  
800x3000 MM

TPOLOGY  
FULL BODY

FINISH  
GLOSSY / MATT

THICKNESS  
15 MM



VANILA PEPPER



LUXERA  
SURFACE  
CRAFTING THE ERA OF LUXURY



VANILA PEPPER

R  
E  
S  
P  
L  
E  
N  
D  
E  
N  
T



LUXERA  
SURFACE  
CRAFTING THE ERA OF LUXURY



VANILA PEPPER



## Cleaning & Maintenance

Our products are non porous (due to their high quality raw materials, stringent production parameters and state of the art technology), hence any dust or deposited waste cannot penetrate the surface.

For most cases only a damp cloth is sufficient for cleaning.

Regular cleaning highlights the aesthetic features of the surface and gives it exceptional shine.

For highly aggressive cleaning caused by some common food and substances follow the table below.

TYPE OF STAIN	CHEMICAL PRODUCT	EXAMPLE
Grease	Alkaline - Solvent	Detergent Ammonia, Backing Soda
Oil	Solvent Oxidant -	Alcohol, Liquid Bleach, Nail Paint Remover
Ink	Solvent Acid Acid	Hydrochloric Acid, Vinegar, Red Harpic
Rust	Acid Alkaline	Descaling Reagent, Hydro Chloric Acid
Lime	Alkaline - Solvent	Hydro Chloric Acid Ammonia, Liquid
Cement	Solvent Acid	Bleach Ammonia, Liquid Bleach Alcohol,
Wine	Solvent Oxidant	Thinner Hydro Chloric Acid Alcohol,
Coffee	Oxidant Alkaline	Thinner Liquid Bleach Liquid Bleach Liquid
Rubber		Bleach
Plaster		
Candle Wax		
Iodine		
Blood		
Ice Cream		

Note: It is recommended that any kind of stain needs to get clean immediately / as soon as possible.

## Technical Specification

CHARACTERISTIC	STANDARD AS PER ISO13006:2018/EN14411 Gr.B1a	MEAN VALUE	TEST METHOD
<b>Regulatory Properties</b>			
Deviation in			
Length and Width	± 0.30 % (±1.00mm)	± 0.10 % ± 5.00 % ±	ISO 10545-2 ISO
Deviation in Thickness	± 5.00 %	0.10 % ± 0.10% ±	10545-2 ISO
Straightness in Side	(±0.50mm) ± 0.30	0.50 % ± 0.50 % ±	10545-2 ISO
Rectangularity	% (±0.80mm) ±	0.50 % >95%	10545-2 ISO
Surface Flatness Central Curvature	0.30 % (±1.50mm) ±	defects free ΔE <	10545-2 ISO
Surface Flatness Edge Curvature	0.40 % (±1.80mm) ±	0.30 Gloss Value>	10545-2 ISO
Surface Flatness Warpage	0.40 % (±1.80mm) ±	90 3 <Gloss	10545-2 ISO
Surface Quality	0.40 % (±1.80mm)	Value<7 7<Gloss	10545-2 ISO
Small Color Difference(for Plain Colour)	>95% defects free	Value<18	10545-16 Gloss
Glossiness ( Polished)	ΔE < 1.00 as per		Meter 60° Gloss
Glossiness (Matt)	mfg. as per mfg. as		Meter 60° Gloss
Glossiness (Satin/Posh)	per mfg.		Meter 60°
<b>Structural Properties</b>			
Water absorption			
<b>Mechanical</b>			
<b>Properties of Massive</b>			
Modulus of Elasticity	≥ 35000 N/mm <sup>2</sup>	≥ 35000 N/mm <sup>2</sup>	ISO 10545-3
Breaking	as per mfg.	Min. 2.28 g/cc	ISO 10545-3
<b>Properties of Tiles</b>			
Strength thickness <7.5			
strength thickness ≥7.5	Min. 35.0 N/mm <sup>2</sup>	Min. 42.0 N/mm <sup>2</sup>	ISO 10545-4
strength thickness ≥(175.5mm)	Min. 700.0 N	Min. 1000.0 N	ISO 10545-4
<b>Surface Mechanical Properties</b>			
MOH S hardness #	Min. 1300.0 N	Min. 1800.0 N	ISO 10545-4
Surface abrasion resistance #		Min. 7500.0 N	ISO 10545-4
Deep abrasion resistance #			
Thermal Hydrometric Properties	as per mfg.	Glossy Min. 4*/ Posh Min. 6	BS EN 15771
Moisture expansion	as per mfg.	Glossy Min. 2/ Posh Min. 3	ISO 10545-7
Thermal expansion(COE) at 100°C	Max. 175m3m	Max. 132mm3	ISO 10545-6
Thermal shock resistance			
Impact resistance(COR) #	Max. 0.06%(0.6mm/m)	Max. 0.02mm/m	ISO 10545-10
Frost resistance	as per mfg.	Max. 6.0 x 1-06	ISO 10545-8
<b>Chemical Properties</b>			
Resistance to staining glazed	Min. 10 Cycle	Min. 10 Cycle	ISO 10545-9
Resistance to household chemicals & swimming pool salts glazed	Min. 0.55	Min. 0.55	ISO 10545-5
Resistance to low concentrate acid and alkalis glazed	as per mfg.	Frost Proof	ISO 10545-12
Resistance to high concentrate acid and alkalis glazed	Min. Class 3	Min. Class 4	ISO 10545-14
	Min. Class GB	Min. Class GA	ISO 10545-13
<b>Safety Properties</b>			
Skid resistance(DCOF-DRY) ##	as per mfg.	Min. Class GLB**	ISO 10545-13
Slip resistance(DCOF)( R value) ##	as per mfg.	Min. Class GHB**	ISO 10545-13
Fire resistance			
	as per mfg.	Glossy P0(<sup>12</sup>) / Posh ≥P1 <sup>(12-24)</sup>	BS 7976-2
	as per mfg.	R9 to R <sup>13</sup>	DIN 51130
	as per mfg.	Fire Proof	N.A.

\*With Nano polished  
 \*\* Except Hydrofluoric Acid & it's compound  
 # Tiles Intended for use on floor  
 ## As per customer requirement

## Packing Details

PRODUCT	BODY	SIZE	THICKNESS	TILES / BOX	COVERAGE AREA / BOX	WEIGHT (Kgs)
Glossy / Matt	Full Body	800x3000mm	15mm	1pc	25.83 Sq ft	84 Kgs
Glossy / Matt	Full Body	800x2400mm	15mm	1pc	20.67 Sq ft	67 Kgs



LUXERA  
SURFACE  
CRAFTING THE ERA OF LUXURY



+91 89804 88888



[luxerasurface@gmail.com](mailto:luxerasurface@gmail.com)



8 A National Highway Near Vishal Furniture Bapa.k.plaza  
Morbi 2 363642